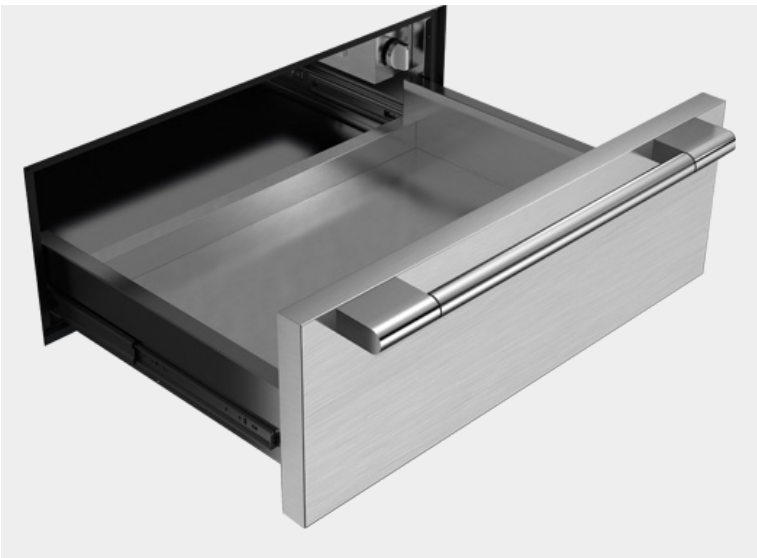


# SOFIA PROFESSIONAL 30"

30" PROFESSIONAL WARMING DRAWER - STAINLESS STEEL









CODE ID

F6PWD30S1



-  Sliding Telescopic Rails
-  Keep Warm Function
-  Leavening
-  Slow Cooking
-  Thawing
-  Soft Closing

## COLOR KIT

	STAINLESS STEEL		
	MATTE BLACK	RAL	9004
	GLOSSY BLACK	RAL	9004
	GLOSSY RED	RAL	3003
	GLOSSY WHITE	RAL	9016
	MATTE WHITE	RAL	9016
	MATTE GREY	RAL	9007
	MATTE SAGE	RAL	1306010

## WARMING DRAWER 30"

Knob Control  
Heavy Duty full extendable telescopic rails  
Large capacity 2,1 cu. ft.  
Convection heating system for even heat distribution  
All stainless steel structure  
Warming Temperature range; min. 86 °F up to 190 °F  
Slow closing assistance  
2 Internal lights  
Non-slip rubber mat

## DRAWER 30" FUNCTIONS

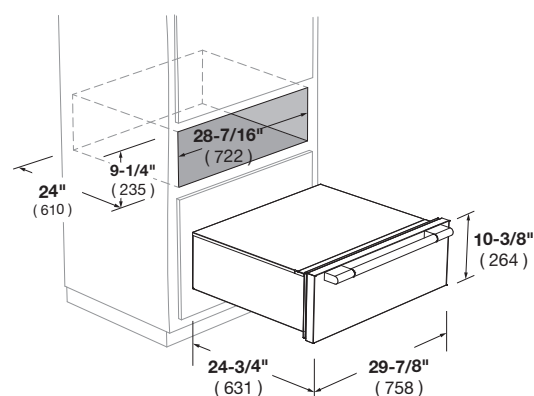
Pre-heat dishes  
Pre-heat coffee cups  
Keep warm ready food  
Defrosting  
Leavening dough  
Slow cooking min. 86 °F up to 190 °F

## OPTIONAL ACCESSORIES

PWDKIT30 ...      Colour kit

# SOFIA

## 30" PROFESSIONAL WARMING DRAWER



CODE ID	F6PWD30S1 - 30" PROFESSIONAL WARMING DRAWER	
Type	Warming Drawer	
Front finish	Stainless Steel with Pro - Handle	
Internal shelf	Inox	
Compatible with ovens	F6PSP30S1 - F6PDP30S1	
<b>PERFORMANCE</b>		
Maximum temperature	194°F / 90°C	
Cooking at low temperature (slow cooking)	•	
Leavening	•	
Heating dishes and food	•	
Slow close assistance	•	
Open / Close push - pull system	-	
<b>CONTROL</b>		
Thermostat	86°F - 194°F / 30°C - 90°C	
Fan assisted	•	
Function Indicator / Thermostat on/off	•	
<b>SAFETY</b>		
Safety front	•	
<b>ELECTRICAL SPECIFICATIONS</b>		
Max power absorbed (W)	1100W	
Power (V-Hz)	120/60	
Power cord	•	
Plug	•	
<b>CAPACITY</b>		
Volume (cbft-litri)	2,1	61.4
<b>DIMENSIONS</b>		
Overall dim - Width	29 7/8"	(758 mm)
Overall dim - Height	10 3/8"	(264 mm)
Overall dim - Depth	23"	(583 mm)
Door Depth with Overlay	2 1/8"	(54 mm)
Door Depth with Pro Handle	4 11/16"	(119 mm)
Cut-out - Width	28 7/16"	(722 mm)
Cut-out - Height	9 1/4"	(235 mm)
Cut-out - Depth	24"	(610 mm)
<b>WEIGHT</b>		
Net Weight	68.5 lbs	31.0 Kg
Gross Weight	75.2 lbs	34.1 Kg